



CONNECTICUT STATE DEPARTMENT OF EDUCATION

# Leading & Thriving through Adversity 2020-2021



@CTDepartmentOfEducation



@EducateCT



## CONNECTICUT STATE DEPARTMENT OF EDUCATION

**Commissioner of Education Dr. Miguel A. Cardona**

**Deputy Commissioner Charlene Russell-Tucker**

**Deputy Commissioner Desi Nesmith**

**Chief of Staff Laura Stefon**

**Legal Director Jessa Mirtle, Esq.**

**Chief Performance Officer Ajit Gopalakrishnan**

**Chief Talent Officer Dr. Shuana Tucker**

**Chief Academic Officer Irene Parisi**

**Division Director for Special Education Bryan Klimkiewicz**

**Director of Communications Peter Yazbak**

**Chief of Fiscal/Administrative Services Roger Persson**

**Bureau of Fiscal Services Education Consultant Leah Grenier**



[@CTDepartmentOfEducation](https://www.facebook.com/CTDepartmentOfEducation)



[@EducateCT](https://twitter.com/EducateCT)



## CONNECTICUT STATE DEPARTMENT OF EDUCATION

### Putting Action Behind Urgency: Prioritizing Equity and Access, Allowing for In-person Learning

- Over 364,000 students (about 70 percent of total enrollment) are regularly attending school in person (34 percent of districts) or hybrid model (60 percent of districts).
- Slightly over 164,000 students attend fully remote based on family choice or because the student lives in a district where remote instruction is the only available option.
- More than 96 percent of fully remote students are logging on and participating in lessons this fall.

	CT	MA	RI	NJ	NYC*	NY**
Fully In-Person	34%	4%	25%	10%	0%	18%
Hybrid	60%	66%	68%	52%	100%	68%
Fully Remote	6%	30%	7%	38%	0%	14%

*Data as of:*                      Sep 28                      Aug 18                      Sep 1                      Sep 24                      Oct 1                      Aug 10

Note: Rhode Island data excludes districts with no data available

\*While 100% of NYC schools as of Thursday opened up hybrid, 480k of families (~50%) opted to have students be remote

\*\*Estimates based on available data



@CTDepartmentOfEducation



@EducateCT





## CONNECTICUT STATE DEPARTMENT OF EDUCATION

### Putting Action Behind Urgency: Providing Funding & Resources Where Needed Most

- Secured \$266 million to help districts deliver education in a way that is equitable, accessible, meaningful – and safe.
- Connecticut's funding package amounts to one of the largest state funding plans per-student in the region and country.
- Distributed to CT districts to help offset costs associated with safely reopening schools, including building cleaning and materials, instructional support, and PPE/masks for students, educators and staff.
- State acquired and distributed 600,000 adult masks to school districts based on Free and Reduced Price meal eligibility.
- 480,000 youth masks, once received, will be distributed in a similar fashion.



@CTDepartmentOfEducation



@EducateCT

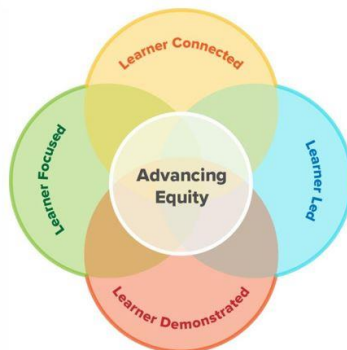


## CONNECTICUT STATE DEPARTMENT OF EDUCATION

# Putting Action Behind Urgency

## On Track to Close Digital Divide

- CT one of only few states taking aggressive action to close the digital divide (Center for Reinventing Public Education):
- Infused more than 142,000 laptops and devices into CT schools for students in greatest need; purchasing internet access for 60,000 student households, and 200 free public hotspots around CT.



- **'CT Learning Hub'** launched to level playing field for all learners and advance equity anytime, anywhere with contributing partners including Common Sense Media's Wide Open School, CT Public, Apple, Khan Academy, and Scholastic.
- Centralized platform with eight learning hubs created in response to the need that arose during class cancellations for free, safe, multilingual, high quality, and high-impact online and offline resources.



@CTDepartmentOfEducation



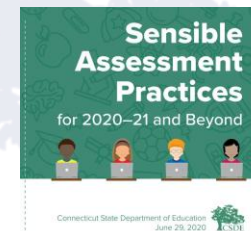
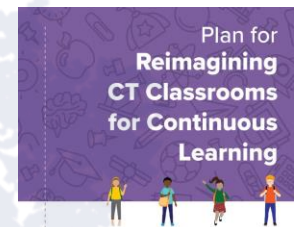
@EducateCT



## CONNECTICUT STATE DEPARTMENT OF EDUCATION

# Educating Through Our Present AND Future Normal

- ✓ **Webinar Series**
- ✓ [Adapt, Advance, Achieve](#)
- ✓ [Plan for Reimagining CT Classrooms for Continuous Learning](#)
- ✓ [Sensible Assessment Practices](#)
- ✓ **Plan for students with high needs (Special Education, 504, English Learners)**
- ✓ [Flexible Staffing Strategies](#)
- ✓ [Addendum 12: Planning for Hybrid and Remote Instructional Guidance](#)
- ✓ [Addendum 14: Supporting Student Attendance Instructions](#)
- ✓ [Addendums and FAQs](#)
- ✓ [CT Learning Hub](#) - *Additional Curricula and Course Based Resources*
- ✓ **Reopening Technical Assistance Team Meetings**
- ✓ **Tuesday Talks**



@CTDepartmentOfEducation



@EducateCT



## CONNECTICUT STATE DEPARTMENT OF EDUCATION

### CSDE Resources, Guidance and Technical Assistance for Districts to Promote Public Health and Support the Safe Reopening of Schools

#### Connecticut State Department of Education **Professional Support Series for Districts**

Please see below and join as we learn together and grow together.

#### Public Health and Safety Training Webinar Series

As part of CSDE's [Professional Support Webinar Series for Districts](#), partnering with CT DPH and Yale School of Public Health to assist districts in planning for the safe reopening of schools by providing a series of virtual training series:

- [Optimizing Ventilation for School Reopening](#)
- [Cleaning and Disinfection Strategies for School Reopening](#)
- [COVID19 and Schools: Mitigation Strategies, Community Spread, and Decision Making](#)
- [Preparing the School Water System for Fall Reopening](#)
- [COVID-19 and Schools — Case Management, Testing, and Assisting with Contact Tracing](#)
- [School Medical Advisors: Supporting School Health & Safety Webinar](#)



@CTDepartmentOfEducation



@EducateCT





## CONNECTICUT STATE DEPARTMENT OF EDUCATION

### CSDE Resources, Guidance and Technical Assistance for Districts to Promote Public Health and Support the Safe Reopening of Schools

#### Frequently Asked Questions Regarding Reopening K–12 Public Schools



Three volumes compiled in response to feedback from ongoing discussions and engagement of students, districts, educators, families, and advocacy organizations.

**Volume I:** <https://portal.ct.gov/-/media/SDE/Digest/2020-21/Reopening-FAQs.pdf>

**Volume II:** [https://portal.ct.gov/-/media/SDE/Digest/2020-21/ReopeningFAQs\\_Volume2.pdf](https://portal.ct.gov/-/media/SDE/Digest/2020-21/ReopeningFAQs_Volume2.pdf)

**Volume III:** [https://portal.ct.gov/-/media/SDE/Digest/2020-21/ReopeningFAQs\\_Volume3.pdf](https://portal.ct.gov/-/media/SDE/Digest/2020-21/ReopeningFAQs_Volume3.pdf)

LOW

MODERATE

HIGH

**CT School Learning Model Indicators:** Indicators of COVID-19 community spread are intended to assist school districts in determining the level of in-person education they will offer. Data are [updated weekly](#) and released every Thursday.



@CTDepartmentOfEducation



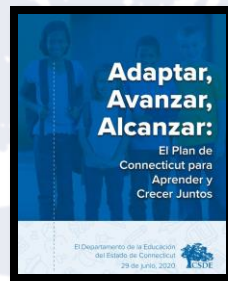
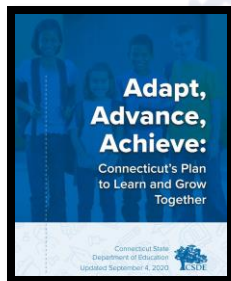
@EducateCT





## CONNECTICUT STATE DEPARTMENT OF EDUCATION

### CSDE Resources, Guidance and Technical Assistance for Districts to Promote Public Health and Support the Safe Reopening of Schools



**CSDE Reopen Schools Support Team 2020:** CSDE established a [Reopen Schools Support team](#) led by former Superintendent Chris Clouet to provide districts with technical and operational support as they reopen and encounter unique local challenges to daily operations.



#### **DPH/CSDE COVID-19: Health and Safety Tuesdays**

Weekly opportunity for superintendents, health officials, policymakers, and other educational partners to engage in dialogue with DPH and CSDE on strategies for a successful, healthy and safe school year.



@CTDepartmentOfEducation



@EducateCT



## CONNECTICUT STATE DEPARTMENT OF EDUCATION

### Addressing Food Insecurity By Ensuring Sustained Access to Healthy Meals Because A Hungry Child Cannot Learn as well

- Since March, Child Nutrition team has supported district food service heroes to provide **+13 million healthy meals** to students.
- When schools closed, CSDE's dedicated Child Nutrition team worked around the clock to ready USDA emergency meals program for **immediate implementation** at hundreds of sites around CT.
- Continued access to these meals provides a **critical lifeline and stability** for children and households grappling with food insecurity, health crises, job losses, isolation, and adapting to new ways of learning.



@CTDepartmentOfEducation



@EducateCT



## CONNECTICUT STATE DEPARTMENT OF EDUCATION



### Federal CARES Act Elementary and Secondary School Emergency Relief Fund

#### Elementary and Secondary School Emergency Relief (ESSER) Funds

- Main federal funding stream dedicated to supporting the state's PK-12 system during the COVID-19 crisis - CT received **\$111.1 million**.
- **\$11.1 million** of ESSER reserved for **state level activities** addressing the following **CSDE priorities**:
  - (1) Equitable Access to High Quality Online Curriculum;
  - (2) Equitable Access to Technology & Connectivity;
  - (3) Addressing Learning Gaps & Safely Reopening Schools; and
  - (4) Social & Emotional well-being of students and staff.
- Balance of funds – **\$99.9 million** – distributed to districts who have **significant flexibility** in spending so existing funds can be repurposed to areas of highest need and immediately address educational disruptions.



@CTDepartmentOfEducation



@EducateCT



## CONNECTICUT STATE DEPARTMENT OF EDUCATION



### Federal CARES Act Coronavirus Relief Fund for School Districts

#### Coronavirus Relief Fund (CRF)

- CT **reserved 12 percent** of its **total** CRF allotment to **directly assist school districts** with **unbudgeted costs** associated with responding to COVID-19.
- In **comparison to neighboring states**, CT's dedication of CRF solely for education is **8 percent higher** than both Rhode Island and Vermont, and **3 percent higher** than Massachusetts.
- CT dedicated **\$159.3 million** in CRF to education spending; allocated as follows:
  - **\$130.8 million** to reimburse districts for **unbudgeted costs** in four categories of spending: (1) Building Cleaning, Health, and PPE; (2) Transportation; (3) Academic; and (4) Student Support.
  - **\$22 million** for **devices and connectivity** (matched with \$15 million in GEER and \$5 million in ESSER for total of **\$42 million**).
  - **\$2 million** for programming that supports students **social and emotional health**; and
  - **\$4.5 million** for purchase of **public WiFi Hot Spots**.

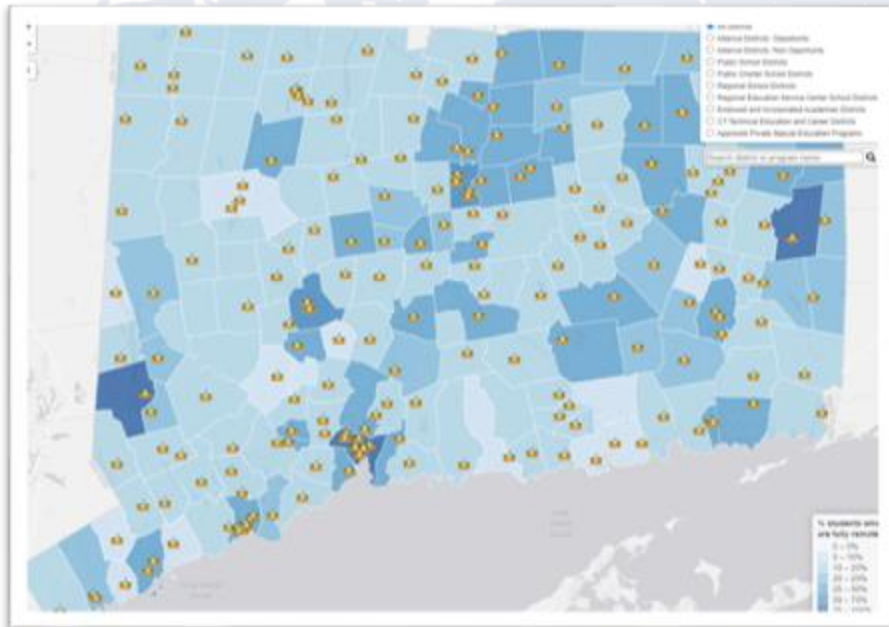




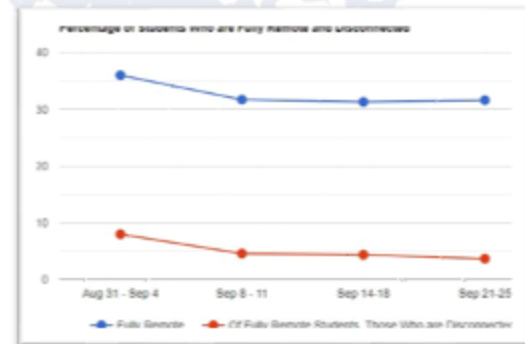
## CONNECTICUT STATE DEPARTMENT OF EDUCATION

### New Data Collections to Better Evaluate and Support Student Participation and Engagement During the 2020-21 Academic Year

Data Collections - (1) Learning Models and Enrollment & (2) Student Membership and Attendance:



- Promote transparency
- Data-driven decisions supporting greater student engagement;
- Establish systems that reach all students keeping them connected with their teachers and schools.
- Evaluate/Monitor attendance and participation trends essential to student achievement.





## CONNECTICUT STATE DEPARTMENT OF EDUCATION

### Confirmed Cases in Public School Districts Among Students and Staff

- Reported Weekly (Wednesday to Thursday) - developing public portal with CT DPH.
- Since schools began opening (Aug 27), total cases of students represent **less than .0008 of total enrollment**.
- CT DPH indicates cases appear to be **originating from activities outside of school** rather than in-school transmission; working with local DPHs to closely track cases and contacts for possibility of in-school transmission.
- Tribute to local collaboration, planning and commitment to implementing and following effective mitigation strategies.

Since Start of School	Total Confirmed Student Cases Reported	Total Confirmed Staff Cases	Total Confirmed Cases
Total	421	143	564
Total Number of Public School Districts Reporting Cases	98		

**Note: data as of 5:00pm on 10/07/2020.**



## CONNECTICUT STATE DEPARTMENT OF EDUCATION

### Moving Forward Together with Greater Sense of Urgency to Continue to Educate

- MTR – advancing multifaceted approach to increase the racial, ethnic and linguistic Diversity of our Teacher Workforce.



- Investing in next generation of skilled talent = investment in CT's growth
- Evolving College and Career Pathways to meet the state's workforce needs.



- Social and Emotional well-being and Mental Health supports remain a priority given relationship to improving conditions for learning and ultimately improving students' school and life outcomes.





## CONNECTICUT STATE DEPARTMENT OF EDUCATION

### Addressing Educational Emergency in Ongoing Pandemic *A New Era in Educational Access & Advocacy*

- More than a virus; pandemic represents an historic disruption to our PK-12 system.
- Sudden shift to online learning – parents became teachers overnight.
- Instant increase in poverty, trauma, and disengagement.
- Most important school year ever - All first year teacher/leaders again but ***Better Prepared*** this time around.
- Pandemic *not over* (+4,500 CT deaths to date) - Top Priority Remains Health/Safety of School Communities.
- We stand with our districts, educators and families as we commit to making 2020-21 a year devoted to creativity, innovation, courage, and reimagining education *together*.



@CTDepartmentOfEducation



@EducateCT